

PWC PREPAID METERING SYSTEM

The **PWC 100** (Prepaid Water Controller) is an intelligent electronic controller for the delivering of prepaid water to residential or commercial installations. The PWC is mounted in either an above-ground - or wall-mount water meter box available from Elster Kent (Part of Honeywell). It is the ideal system for delivering prepaid water for municipalities, complexes, estates, low cost housing developments and landlords.

The PWC uses the Standard Transfer Specification (STS) as the credit transfer technology for the loading of purchased credit. The PWC is approved by the STS Association to conform to the IEC 62055-41 and 62055-51 standards. Credit tokens are purchased from any participating STS compliant vending platform (same as prepaid electricity) at local retailers, ATM's, Internet or via SMS. Many STS certified vending platforms are already established globally for the selling of prepaid electricity and water

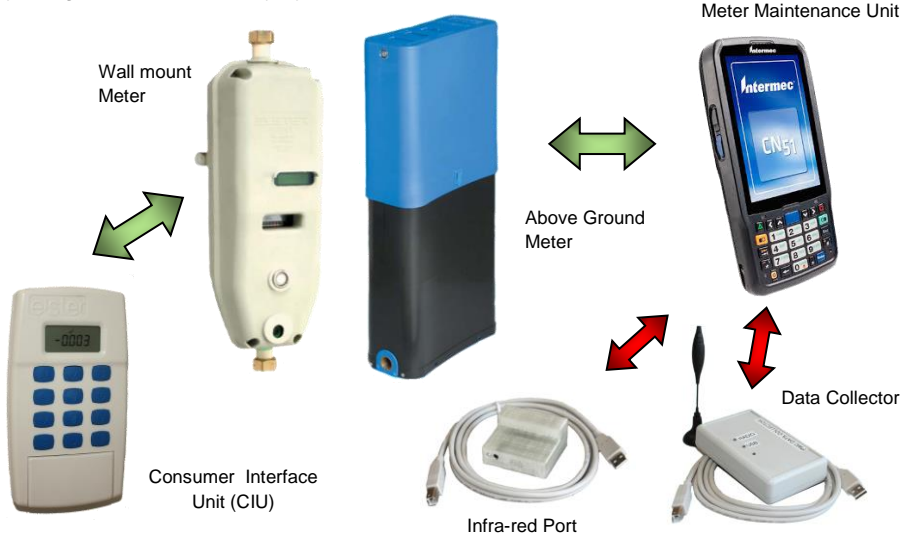
Different Meter Modes are available to operate in Prepaid -, Debit -, Fixed Water Dispenser - or Conventional Mode. The PWC hosts up to 6 credit registers, ranging from Purchased Credit, Free Basic Water, Social Grant, Lifeline, Emergency and Test Credit, to cater for all water delivery- and other social commitments. Free Basic Water is either loaded manually with a FBW Credit Token, or delivered automatically on a daily or monthly basis.

The PWC has a built in display as well as bi-directional 868mHz radio communications link, assembled in a meter box containing a pulse output water meter, stopcock and water valve.

Mounted inside the consumer house is a wall-mount Consumer Interface Unit (CIU) that links up with the PWC, via radio communications link. The CIU indicates the credit remaining on the PWC and facilitates the entering 20 digit prepaid credit tokens. The CIU refreshes itself automatically every hour or on demand. A series of user commands are available to lock the meter, view token history, water usage, as well as many other user friendly features.

A Meter Maintenance Unit (MMU) is a portable handheld device that communicates with the PWC via an Infra Red (IR) port. This device is used for commissioning of meters, changing meter configuration and reading diagnostic data for fault finding and consumer queries. The PWC Data Collector is an attachment to the MMU, turning it to a mobile AMR Meter Reading device.

AMR (Automatic Meter Reading) and AMC (Automated Meter Configuration) facilitates the remote uploading of meter and consumption data, or mass meter re-configuration, using drive-by or walk-by methods. The user has the ability to pre-select only the required data fields to be uploaded from the meter. AMR data is stored in CSV format for easy integration to third party systems or Microsoft Excel.



FEATURES

- Split Meter System for added Consumer Convenience
 - Secure Encrypted Radio Link
- ### PWC
- Unique Bar-coded Prepaid Number
 - Daily or Monthly Free Basic Water
 - Daily or Monthly Accumulation of Unused FBW.
 - Leak Detection
 - Minimum Flow Measurement
 - 90 Days Hourly Data Logger
 - Utility Lock
 - Water Conservation Limit
 - Preset GPS Location
 - Credit Load History
 - In-the-Field Mass Meter Configuration
 - Internal Antenna (No Loose Wires)
 - Battery Low Indication
 - Replaceable Battery Pack
 - Up to 10 Year Battery Life
- ### CIU
- Credit Low Warning
 - Consumer Lock Command
 - Resettable User Totalizer
 - User Replaceable AA Batteries
 - 5 Year Battery Life
- ### AMR
- User Selectable Data Fields
 - Reliable and Accurate Readings
 - No Duplicate Readings
 - Route Tracking on Google Maps
 - Microsoft Excel Compatible Report
- ### VALVE
- 15 Bar Pressure Rating
 - Tried and Tested Valve
 - More than 600,000 installed
- ### MMU
- Unlimited AMR records
 - Robust, Drop Proof Design